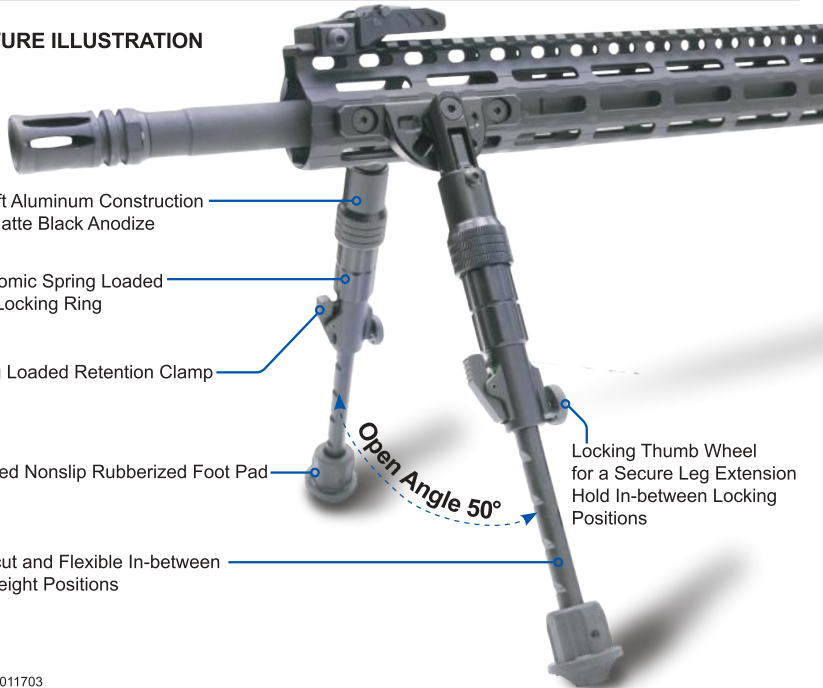


# RECON FLEX™ BIPODS COMBO MANUAL

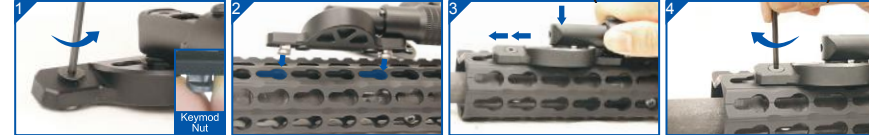
UTG® For Model: TL-BPDK01(KEYMOD) / TL-BPDM01(M-LOK™)

Item # (Model)	TL-BPDK01 (KEYMOD) <small>KEYMOD COMPATIBLE</small>	TL-BPDM01 (M-LOK™) <small>M-LOK</small>
Center Height (Min - Max)	5.7" - 8.0"	5.7" - 8.0"
Leg Length (Min - Max)	6.3" - 9.0"	6.3" - 9.0"
Foot Pad	Rubberized	Rubberized
Weight	10.8oz / 2pcs	10.8oz / 2pcs
Panning	X	X
Foldable	√	√
Extendable Legs	√	√
Quick Retraction Button	X	X
Swivel Stud Mount	X	X
Bidirectional Folding	√	√

## FEATURE ILLUSTRATION

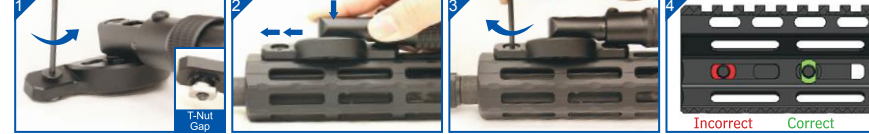


## RECON FLEX™ KEYMOD INSTALLATION INSTRUCTIONS (FOR TL-BPDK01 ONLY)



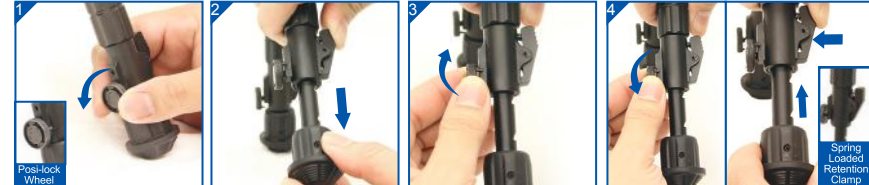
1. Hold the Keymod Nut in place and loosen the screw by turning it counterclockwise with the included 1/8" Allen Wrench. Be sure not to unscrew too far as to allow the Keymod to free spin or detach. Do this to both of the Keymod Nuts on each bipod leg.
2. Place the mounting base so that the Keymod Nuts insert into the desired slots of the handguard through the slot's larger opening. Make sure the Nut's protruding feet are facing towards the muzzle of the firearm. Carefully look at each bipod leg's Keymod Nuts to determine which one is already setup for the 3 or 9 o'clock positions of the handguard.
3. Once the Keymod Nuts are seated in the larger opening of the slot, carefully slide the mounting base forward towards the muzzle until it fully seats into and engages the handguard.
4. Retighten the Keymod Nuts by turning the Allen Wrench clockwise until securely tightened while holding the mounting base in place. Recommended torque value: 20 in-lbs.

## RECON FLEX™ M-LOK™ INSTALLATION INSTRUCTIONS (FOR TL-BPDM01 ONLY)



1. Hold the T-Nut in place and loosen the screw by turning it counterclockwise with the included 3/32" Allen Wrench until the gap between the T-Nut and the bipod's mounting base (T-Nut Gap) is slightly larger than the thickness of the handguard. Measuring the thickness of the handguard directly or use the gauge. Do this to both of the T-Nuts for each bipod leg.
  2. Place the mounting base so that the T-Nuts insert into the desired slots of the handguard. The bottom of the mounting base must sit flush with the mounting surface of the handguard. "Bias" the mounting base towards the muzzle by applying lateral pressure until contact is made with that side of the slot.
  3. Once seated and "biased", hold the mounting base in place and retighten the T-Nuts by turning the Allen Wrench clockwise until securely tightened. Recommended torque value: 35 in-lbs.
- NOTE:** Pay special attention that the T-Nut catches on the slot and rotates the T-Nut to a 90 degree perpendicular alignment in relation to the slot. This can often be seen within the first 1/4" turn of the screw if the T-Nut Gap was adjusted properly earlier on.

## BIPOD LEG HEIGHT ADJUSTMENT INSTRUCTIONS



1. Make sure the Posi-lock Wheel is fully unlocked by turning it all the way counterclockwise.
2. Extend the bipod leg to any of the five precut positions by pulling down on the Rubberized Foot Pad and positioning it at the desired precut notch. For added bipod leg retention, turn the Posi-lock Wheel clockwise until tightened after.
3. If the desired bipod leg height happens to be in-between two precut notches simply turn the Posi-lock Wheel clockwise until tightened to lock the bipod leg in place at this specific location.
4. To retract the bipod leg, first make sure to unlock the Posi-lock Wheel by turning it all the way counterclockwise. Next, press and hold the Spring Loaded Retention Clamp while pushing the bipod leg back into its housing until it clicks into the precut notch found just above the start of the Rubberized Foot Pad. For added bipod leg retention, turn the Posi-lock Wheel clockwise until tightened after.

## BIDIRECTIONAL FOLDING OPERATING INSTRUCTIONS



1. To unlock the bipod leg pull the Spring Loaded Slide Locking Ring downward towards the Foot Pad.
2. While holding the the Spring Loaded Slide Locking Ring downward pivot the bipod leg into any one of its five locking positions. Release the the Spring Loaded Slide Locking Ring when in the desired position. Confirm the leg is locked in place by giving it a light push or pull.