

USER MANUAL

# CHASSIS MOTUS

---

FOR TIKKA T1X RIFLES

R  M E

A C C E S S O R I E S



# INDEX CONTENTS

INTRODUCTION .....	3
TIKKA TIX .....	4
ACCESSORIES .....	8
NOTES .....	11



# INTRODUCTION

Welcome to the ROME Accessories world.

With this chassis kit for Tikka T1X you can give a new life to your rifle. Carefully following the instructions you can disassemble and assemble your firearm in a few steps, to fit in your new ROME Accessories chassis.

To purchase the additional accessories for your kit visit our website [www.romeaccessories.it](http://www.romeaccessories.it) or scan the QR code that you will find on page **10** of this manual with your smartphone.

If you need support or if any information, please contact your trusted dealer or our customer service team.

Thank you for choosing ROME Accessories.

# COMPONENTS INCLUDED IN TIKKA T1X MOTUS KIT

"R" SERIE

## CHASSIS

- MONOBLOCK 6082 CHASSIS
- FOREND WITH M-LOK AND QD ATTACHMENTS, WITH ANSCHUTZ-TYPE RAIL AND ARCA RAIL
- BUTTSTOCK ROME MOTUS
- GRIP 4025
- ACTION RAIL 20MoA

## SCREWS

- 1x- A - TCEI M6 x 16
- 1x - B - TCEI M6 x 50
- 1x - C - TCEI M4 x 10
- 1x - D - Spina elastica D.2 x 16
- 1x - E - TCEI M6 x 20

# DISASSEMBLY

## TIKKA T1X

1. Take your TIKKA T1X rifle and remove the screws that couple the action to the body, following the instructions supplied by the parent company of your firearm. If any, remove rails and scope (Pic. 1).



Pic. 1

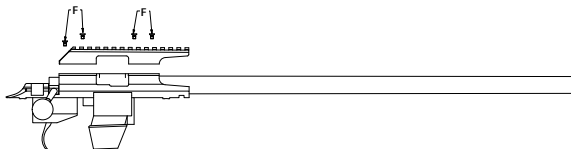
---

## WARNINGS

- Keep aside the screws that you removed previously from your TIKKA T1X rifle, not to lose them. We strongly suggest using only the screws included in the ROME Accessories kit, and not screws of other type. If not, we cannot guarantee the proper functioning of our components.
- For the same reason, we suggest using only the parts provided in your ROME Accessories kit, and to follow the instructions on pages 6 and 7, to properly assemble your TIKKA T1X rifle into your new ROME Accessories chassis.
- Follow all safety instructions in the manual supplied by the parent company of your firearm.
- ROME (Rottigni Officina Meccanica S.r.l.) does not assume any Responsibility for using parts or components not included in the assembly kit, or in case of any kind of modification of the components supplied with the kit.

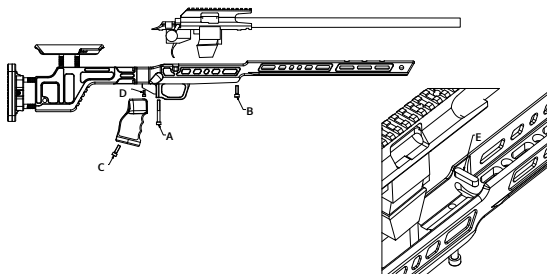
# ASSEMBLY OF THE MOTUS KIT FOR TIKKA T1X

1. Check if your action is clean and free from any friction. Install your rail onto the action using LOXEAL 24-18 threadlock or similar (Pic. 2).



Pic. 2

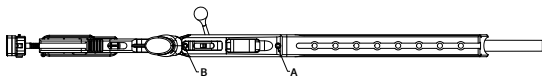
2. Insert the key (E) inside the body, then pay particular attention to push the key backside and to keep it always in contact with the vertical surface of the chassis body (Pic. 3). Push the action backwards while tightening the fixing screws. We suggest to mount the rifle mechanics before mounting the grip.



Pic. 3

## ASSEMBLY OF THE MOTUS KIT FOR TIKKA T1X

3. Tighten the screws A and B, paying attention to ensure the suggested tightening torque (Nm) below.



Pic. 4

**Screw A: 6.5 Nm | Screw B: 9 Nm**

Use medium **LOXEAL 55-03** threadlock (or similar).

---

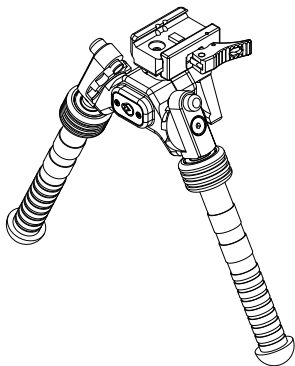
4. Once you've fixed the screws using the correct tightening torque you'll have completed the assembly of the ROME Accessories kit onto your rifle.



Pic. 5

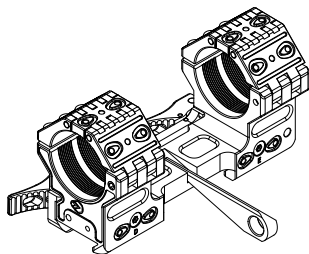
## ACCESSORIES AVAILABLE AS OPTIONS

Below you will find some of ROME Accessories products available on our online shop at [www.romeaccessories.it](http://www.romeaccessories.it), enter the name of the accessory chosen to complete your set of ROME Accessories equipment.



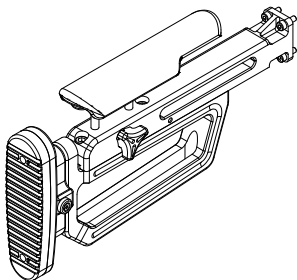
### **Basis Maximo Bipod**

cod. BPDRO295



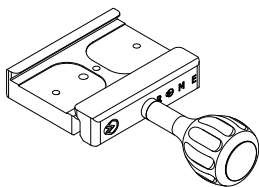
### **Decumanus M1 Quick Mount**

cod. MIN00Q



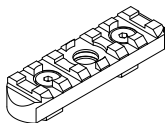
## Buttstock Performance

cod. ARO507



## Clamp for arca rail with knob

cod. ARO214



## Picatinny rail QD and M-LOK® compatible

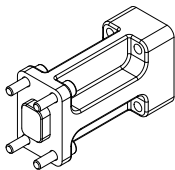
cod. TAC355

SCAN YOUR  
QR CODE  
WITH YOUR  
SMARTPHONE  
TO VISIT OUR  
ONLINE SHOP



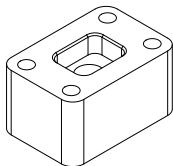
### QD for sling attachment

cod. ARO216



### Spacer L=65

cod. ARO506



### Spacer L = 20 mm

cod. ARO511









[www.romeaccessories.it](http://www.romeaccessories.it)