

HOUND



Day & Night Technologies

Ballistic Thermal Monocular

CONTENTS

HOUND SERIES BALLISTIC THERMAL MONOCULAR

General Information	01	Main Functions	12
Specifications	02	Laser Rangefinding	12
Features	03	Ballistic Calculator	14
Main Parts and Controls	04	Using the Ballistic Calculator	15
Power Supply	05	App Connection	16
Data Transfer	06	Installing the DNT App	16
Control Description	07	Connecting App to Device	17
On-Screen Display	08	Troubleshooting	19
Menu List	09	Customer Support and Warranty Assistance	19
		FCC Warning	20

HOUND SERIES

Ballistic Thermal Monocular

SAFETY INSTRUCTIONS

- Do not point the device at intense light sources such as the sun or open flames, as this may permanently damage the thermal sensor.
 - Device operating temperature: -4°F to 122°F (-20°C to 50°C).
 - If the device malfunctions, contact customer support (info@dntoptics.com). Do not attempt to disassemble the device.
-

DESCRIPTION

The HOUND Ballistic Thermal Monocular is a portable, lightweight handheld thermal imaging device designed for superior performance in all lighting conditions. With advanced features such as a built-in ballistic calculator, precision rangefinder, and different thermal palettes, the HOUND series delivers accurate and reliable data for professionals and enthusiasts alike.

PACKAGE CONTENT

- HOUND Ballistic Thermal Monocular
- Eye Cup
- Carrying Pouch
- Wrist Strap
- Lanyard
- USB-C Cable
- Microfiber Cloth
- HOUND Quick Start
- HOUND User Manual



SPECIFICATIONS

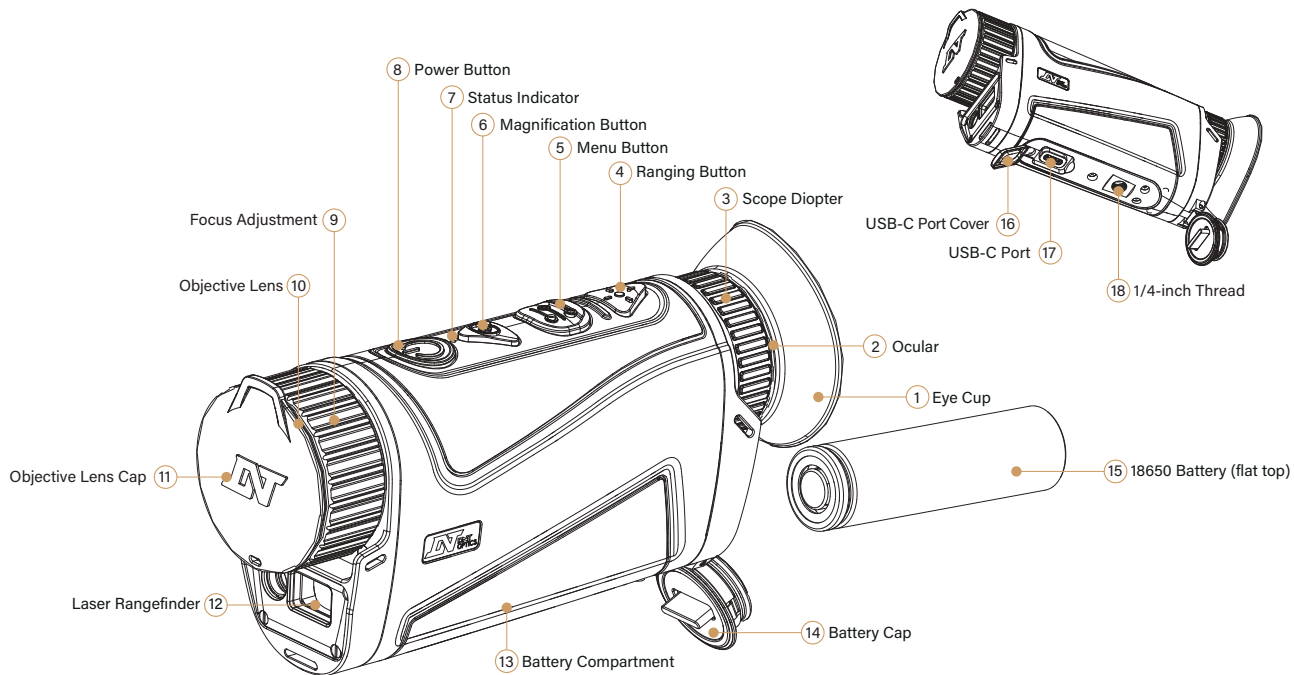
	Model	H315R	H325R	H635R
Sensor Specifications	Sensor Resolution	384 × 288 pixels	384 × 288 pixels	640 × 512 pixels
	Sensor Type	Uncooled Infrared Sensor		
	Sensor Frame Rate	50 fps		
	Pixel Size	12 × 12 μm		
	NETD	≤ 18 mk (@25°C)		
	Eye Relief	25 mm		
	Base Magnification	1.5x	2.5x	2x
Digital Zoom	1.5x, 3x, 4.5x, 6x	2.5x, 5x, 7.5x, 10x	2x, 4x, 6x, 8x	
Display Specifications	Display Type	Micro - OLED		
	Display Resolution	1024 × 768 pixels		
	Display Refresh Rate	50 Hz		
Optics Specifications	FOV (H × V) degrees / yd @ 100 yd	17.7 × 13.3 / 30.7 × 23.0	10.6 × 7.9 / 18.4 × 13.8	12.6 × 10.1 / 21.9 × 17.6
	Objective Focal Length	15 mm	25 mm	35 mm
Power Specifications	Battery Type	18650 Battery (Flat-top)		
	Operating Time	5.5 h		5 h
	External Power Supply	5V USB-C		
	Net Weight	288 g / 10.16 oz	299 g / 10.55 oz	310 g / 10.93 oz
	Dimensions	155 × 48 × 72 mm	155 × 48 × 72 mm	157 × 51 × 72 mm
6.1 × 1.9 × 2.8 inches		6.1 × 1.9 × 2.8 inches	6.2 × 2.0 × 2.8 inches	
Physical Specifications	Storage	Built-in Storage, 32 GB		
	Ingress Protection Level	IP67		

■ FEATURES

- Precision Ballistics: Built-in ballistic calculator for accurate targeting.
- Thermal Palettes: Switch between White Hot, Black Hot, Red Hot, and Iron Hot modes.
- High-Resolution Display: HD Micro-OLED display with a resolution of 1024×768 pixels.
- Laser Rangefinder: Detects targets up to 1,200 yards (1,100 meters).
- Full-Screen Recording: Includes on-screen display, reticle, and rangefinder data.
- Wi-Fi and App Support: Seamless data transfer and ballistic adjustments via the DNT App.



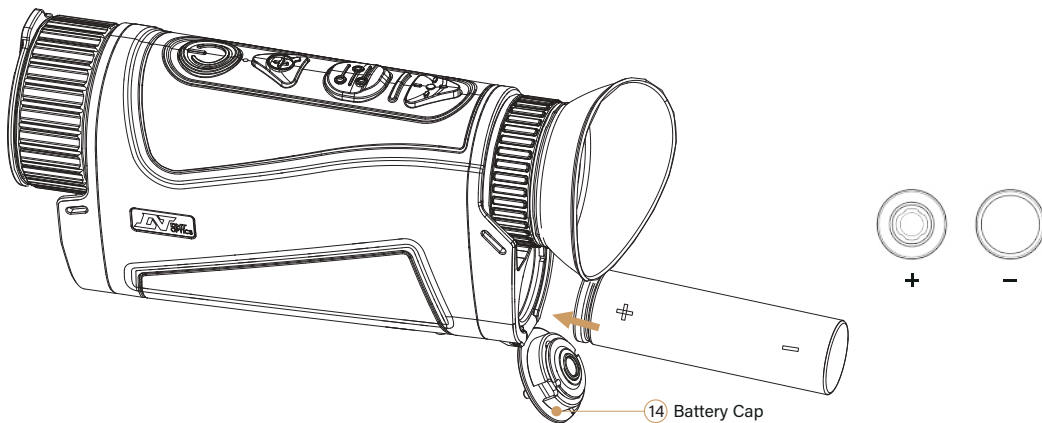
■ MAIN PARTS AND CONTROLS



■ POWER SUPPLY

The HOUND device is powered by a rechargeable 18650 lithium battery (flat top). The battery can be installed or replaced as follows:

- Open the **Battery Cap** 14 by pressing the locking tab downward.
- Insert the 18650 battery (flat top) with the **“+” terminal facing inward**.
- Secure the **Battery Cap** 14 by pressing gently until it clicks into place.



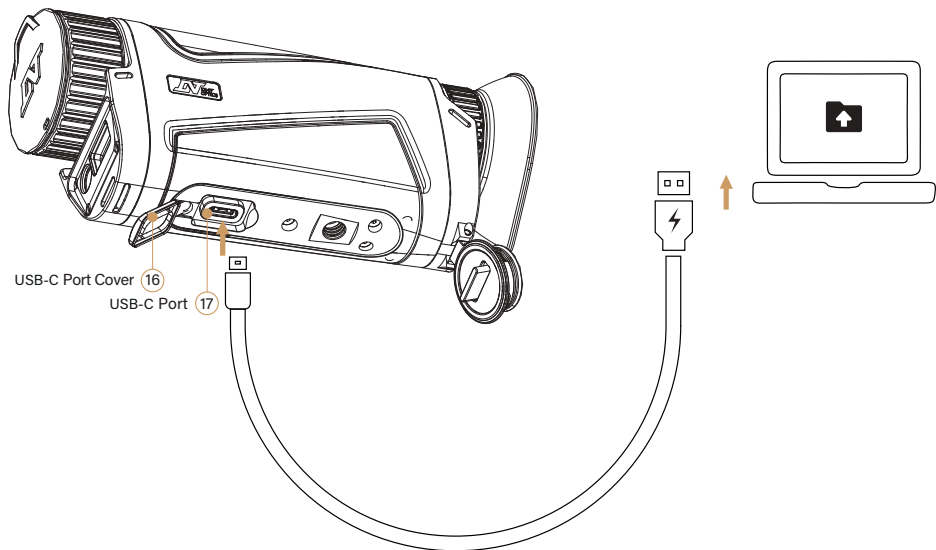


■ DATA TRANSFER

The HOUND supports operation via an external USB-C power source.

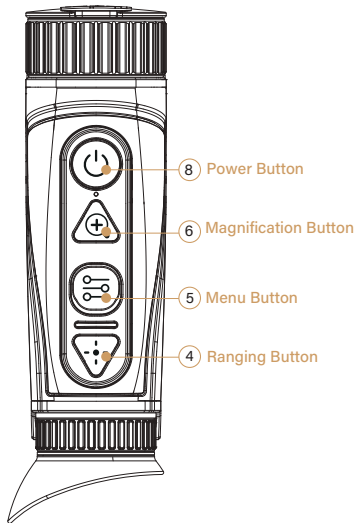
Note: The USB-C port does not charge the 18650 battery. Please remove the battery when using USB power and recharge it with an external battery charger.

The USB-C connection can also be used to download videos from the device. When plugged into a computer via a USB-C cable, the HOUND will appear as an external drive, allowing you to browse, open, and download files. Data transfer can also be performed via the DNT app.




■ CONTROL DESCRIPTION


To turn on the device, long press the **Power Button**  until the screen activates.



On Main Screen, Use the Buttons as Follows:

 Power Button	Long Press	Power the device off
	Short Press	Enter/exit standby

 Magnification Button	Long Press	Adjust screen brightness
	Short Press	Adjust zoom levels
	Quick Double Press	Activate NUC

 Menu Button	Long Press	Open/exit the menu
	Short Press	Switch between thermal palettes
	Quick Double Press	Switch between imaging modes

 Ranging Button	Long Press	Start/stop recording
	Short Press	Activate the rangefinder

In the Settings Menu, Use the Buttons as Follows:

 Magnification Button	Short Press	Move the cursor up
---	-------------	--------------------

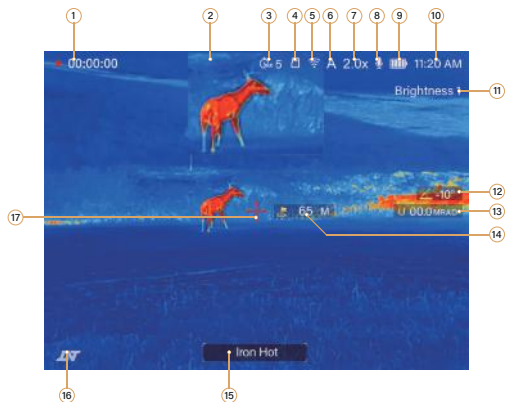
 Ranging Button	Short Press	Move the cursor down
---	-------------	----------------------

 Menu Button	Short Press	Confirm your selection
--	-------------	------------------------

In Submenus (Level 2 or 3), Use the Buttons as Follows:

 Menu Button	Long Press	Return to the previous page
	Short Press	Confirm/move the cursor to the right

ON-SCREEN DISPLAY



- ① Recording Indicator: Indicates that the video is being recorded
- ② PIP Window
- ③ NUC: In auto mode, a 5-second countdown appears before shutter activation
- ④ Storage Status Icon: Only visible if there is an issue with the internal storage
- ⑤ WiFi Icon: Only visible when WiFi is on
- ⑥ A: Active Ballistic Profile (DOPE)
- ⑦ Current Magnification (e.g. 2.0x)

- ⑧ Microphone: Shows if audio is being recorded with video

(Microphone ON, Microphone OFF)

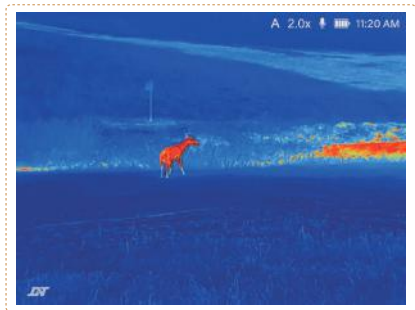
- ⑨ Battery Level:

Icon	Status	Battery Status
	Low Battery	0% ~ 10%
	1 bar	10% ~ 20%
	2 bars	20% ~ 50%
	3 bars	50% ~ 80%
	4 bars	80% ~ 100%
	USB Powered	Connected to type C

- ⑩ Current Time
- ⑪ Current Screen Brightness Level (1-5)
- ⑫ Gyroscope Angle
- ⑬ Ballistic Solution
- ⑭ Target Distance
- ⑮ Current Thermal Palette
- ⑯ DNT Watermark
- ⑰ Ranging Icon

■ MENU LIST

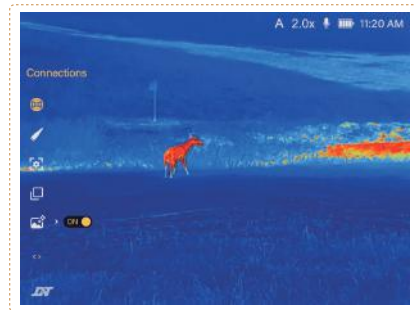
On the main screen (Figure 1), press and hold the **Menu Button**  to open the settings menu (Figure 2).



(Figure 1)



Long press for 2s



(Figure 2)

In the settings menu, use the **Magnification Button**  and **Ranging Button**  to navigate up and down.



⑥ Magnification Button



Up



④ Ranging Button









Down





■ MENU LIST

- Long press the **Menu Button**  to open the menu page.
- Use the following buttons to scroll through the 8 menu options: **Magnification Button**  : Move up. **Ranging Button**  : Move down.

Icon	Description
	【Connections】 Turn Wi-Fi ON / OFF
	【Ballistic Calculator】 Turn ON / OFF Ballistic Calculation Ballistic Data Settings Display Ballistics: MRAD / MOA / cm / inches
	【LRF Settings】 Ranging Modes: Single Pulse Ranging / Continuous Ranging Ranging Units: Meter / Yard
	【PIP Settings】 Off / Left / Center / Right
	【Image Super Resolution】 ON / OFF
	【Thermal Image Settings】 Thermal Imaging Mode: Natural / Enhanced / Highlight NUC (Non-Uniformity Correction): Auto Mode / Manual Mode Palettes: White Hot / Black Hot / Red Hot / Iron Hot Image Contrast: 1 / 2 / 3 / 4 / 5 Image Brightness: 1 / 2 / 3 / 4 / 5 Image Sharpness: 1 / 2 / 3 / 4 / 5 Hotspot Tracking: ON / OFF

■ MENU LIST

- Long press the **Menu Button**  to open the menu page.
- Use the following buttons to scroll through the 8 menu options: **Magnification Button**  : Move up. **Ranging Button**  : Move down.

Icon	Description
	<p>【Function Settings】 Defective Pixel Repair Auto Power Off: Auto shutdown after entering Standby Mode: Off / 10 / 20 / 30 minutes Loop Recording: Off (default 10 minutes) / 1 / 3 / 5minutes Audio Recording: ON / OFF Gyroscope: ON / OFF / Calibration Screen Brightness: 1 / 2 / 3 / 4 / 5</p>
	<p>【System Settings】 Date / Time Language Setting: English / Français / Español / Deutsch / Italiano Format Restore Default Settings Available Storage Version</p>









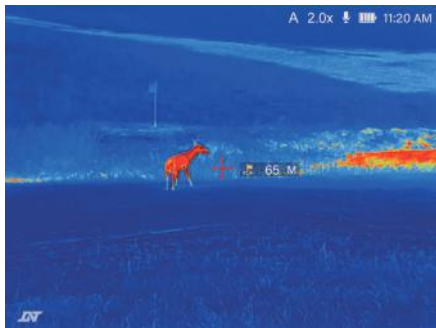
■ MAIN FUNCTIONS

Laser Rangefinding

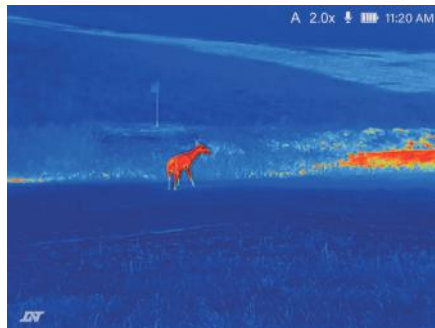
The HOUND's built-in rangefinder can operate in two modes: continuous ranging and single pulse ranging.

Mode 1: Continuous Ranging

- Long press the **Menu Button**  for 2 seconds to open the settings.
- Use the **Ranging Button**  to navigate to "LRF Settings">"Ranging Modes", and select "**Continuous Ranging**".
- Long press the **Menu Button**  until you reach the main screen.
- Short press the **Ranging Button**  to activate the rangefinder. (The screen will display the rangefinder icon and continuously update the target distance in real time.)
- To deactivate, there are three options:
 - Option 1:** When Ballistic Calculator is off, short press the **Ranging Button**  .
 - Option 2:** When Ballistic Calculator is on, short press the **Menu Button**  .
 - Option 3:** After 20 seconds of inactivity, the rangefinder will also turn off automatically.







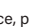

(First short press the Ranging Button)

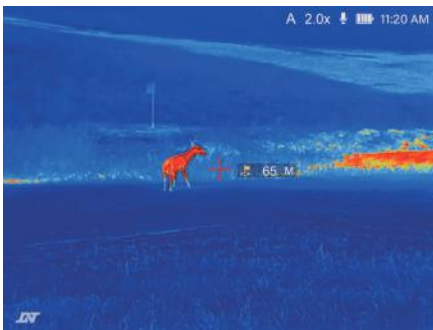


(Short press the Ranging Button or Menu Button)

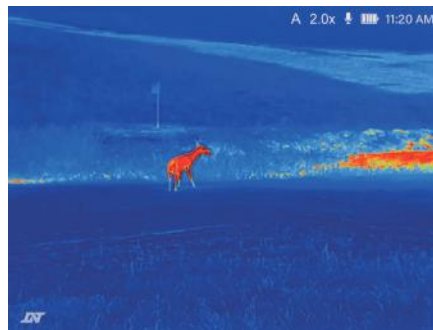
Laser Rangefinding

Mode 2: Single Pulse Ranging

- Long press the **Menu Button**  for 2 seconds to open the settings.
- Use the **Ranging Button**  to navigate to "LRF Settings">"Ranging Modes", and select "**Single Pulse Ranging**".
- Long press the **Menu Button**  until you reach the main screen.
- Short press the **Ranging Button**  to activate the rangefinder and measure the distance to a target.
- To measure a new distance, press the **Ranging Button**  again.
- To deactivate, short press the **Menu Button** . (The rangefinder will also turn off automatically after 20 seconds of inactivity.)



(First press the Ranging Button)










(Short press the Menu Button)

Ballistic Calculator

The built-in ballistic calculator allows you to calculate precise point-of-impact adjustments based on ranging data.

Ballistics Profiles

- Long press the **Menu Button**  for 2 seconds to open the settings.
- Select "Ballistic Calculator" > "Ballistic Data Settings" to set up your Ballistic Data.
- Use the **Magnification Button**  (up) and **Ranging Button**  (down) to navigate through the fields, as shown in Figure 1.
- Press the **Menu Button**  to select the desired field.
- Use the **Magnification Button**  (up) and **Ranging Button**  (down) to adjust the value up or down, as shown in Figure 2.
- Press and hold the **Menu Button**  to save the changes and exit the interface.







(Figure 1)

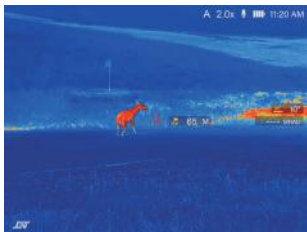


(Figure 2)

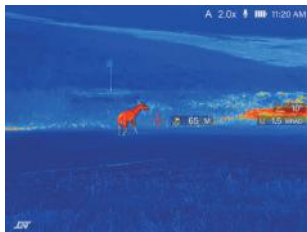
Using the Ballistic Calculator

In the settings menu, toggle "Ballistic Calculator" on. The following steps show the operation in Continuous Ranging Mode:

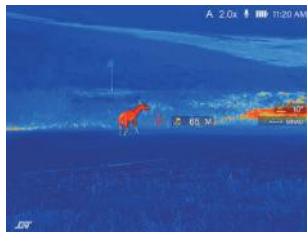
- First short press of the **Ranging Button**  : Activate the rangefinder. The target distance and gyroscope angle values will be displayed (see Figure 1).
- Second short press of the **Ranging Button**  : Enable ballistic calculation. The ballistic solution, along with the distance and gyroscope angle values, will be displayed (see Figure 2).
- Third short press of the **Ranging Button**  : Reset for a new target. The target distance and gyroscope angle values will be displayed (see Figure 3).
- Short press the **Menu Button**  : Deactivate the ranging function (see Figure 4).



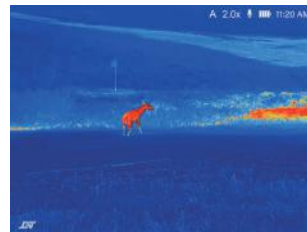
(Figure 1)



(Figure 2)



(Figure 3)



(Figure 4)



■ APP CONNECTION

Installing DNT APP

You can download the DNT App from Google Play (Android) or the App Store (iOS), or scan the QR codes below.



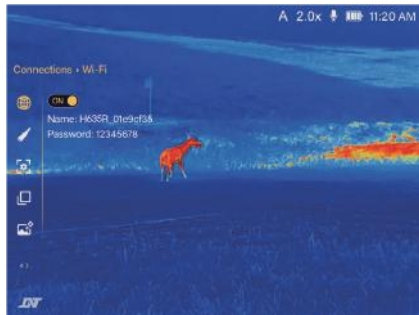
Android



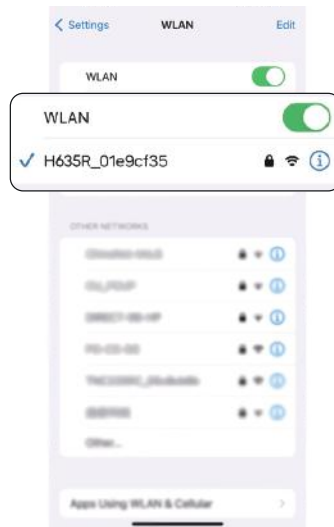
iOS

Connecting App to Device

- In the settings menu, navigate to "Connections" > "Wi-Fi".
- Toggle Wi-Fi on. The device's Wi-Fi name and password will then be displayed, as shown in Figure 1.
- On your phone, open the WLAN settings, find and select the device's Wi-Fi name.
- Enter the password (12345678), tap "Connect", and wait for the connection to be established.



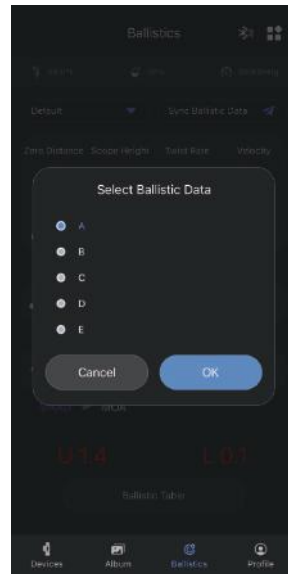
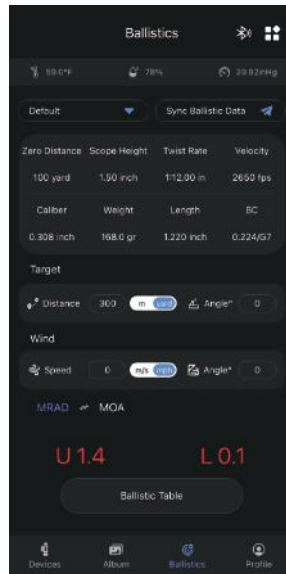
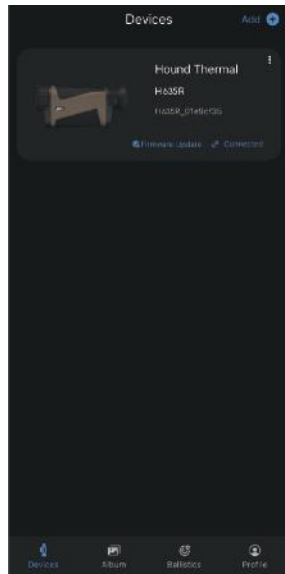
(Figure 1)





Connecting App to Device

Once connected, use the DNT App to configure ballistics, transfer data, and update profiles.



■ TROUBLESHOOTING

- Device Not Powering On: Check battery orientation and charge level.
- Poor Image Quality: Adjust diopter, focus and thermal settings.
- Wi-Fi Connection Issues: Restart device and reconnect via the app.
- Inaccurate Ballistic Solution: Check if gyroscope is calibrated.

■ CUSTOMER SUPPORT AND WARRANTY ASSISTANCE

For support, troubleshooting, or warranty claims, contact our customer service team at: info@dnptoptics.com.



■ FCC WARNING

This device complies with Part 15 of the FCC Rules. Operation is subject to the following two conditions: (1) this device may not cause harmful interference, and (2) this device must accept any interference received, including interference that may cause undesired operation.

Any changes or modifications not expressly approved by the party responsible for compliance could void the user's authority to operate the equipment.

NOTE: This equipment has been tested and found to comply with the limits for a Class B digital device, pursuant to Part 15 of the FCC Rules. These limits are designed to provide reasonable protection against harmful interference in a residential installation. This equipment generates, uses and can radiate radio frequency energy and, if not installed and used in accordance with the instructions, may cause harmful interference to radio communications. However, there is no guarantee that interference will not occur in a particular installation.

If this equipment does cause harmful interference to radio or television reception, which can be determined by turning the equipment off and on, the user is encouraged to try to correct the interference by one or more of the following measures:

- Reorient or relocate the receiving antenna.
- Increase the separation between the equipment and receiver.
- Connect the equipment into an outlet on a circuit different from that to which the receiver is connected.
- Consult the dealer or an experienced radio/TV technician for help.

To maintain compliance with FCC's RF Exposure guidelines, this equipment must be installed and operated with a minimum distance of 20cm between the radiator and your body. Use only the supplied antenna.





「 Scan to check for the latest available version online. 」